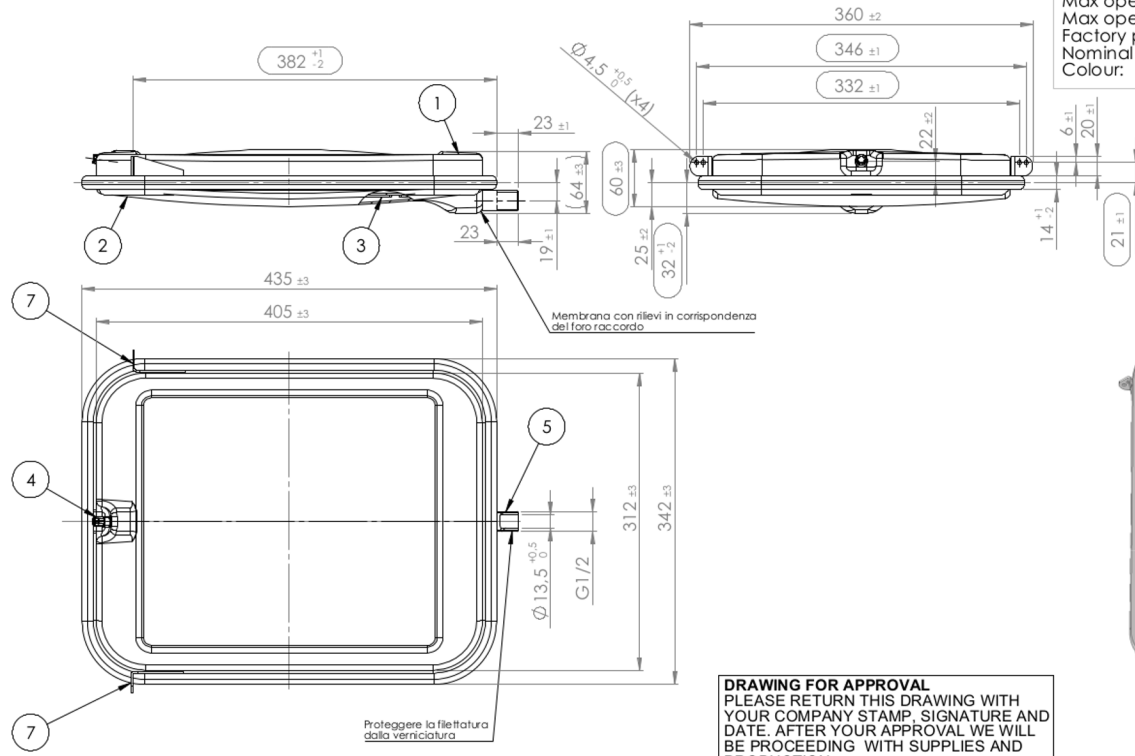


Max operating pressure: 3 bar
 Max operating temperature: 90 °C
 Factory precharge*: 1±0,1 bar
 Nominal volume: 6 litres
 Colour: Silver



DRAWING FOR APPROVAL
 PLEASE RETURN THIS DRAWING WITH YOUR COMPANY STAMP, SIGNATURE AND DATE. AFTER YOUR APPROVAL WE WILL BE PROCEEDING WITH SUPPLIES AND PRODUCTION.

DRAWING FOR APPROVAL
 PLEASE RETURN THIS DRAWING WITH YOUR COMPANY STAMP, SIGNATURE AND DATE. AFTER YOUR APPROVAL WE WILL BE PROCEEDING WITH SUPPLIES AND PRODUCTION.

1	UPPER HEAD	1
2	DOWNER HEAD	1
3	MEMBRANE	1
4	PRECHARGE VALVE	1
5	THREADED NOZZLE	1
6	SELF-ADHESIVE LABEL	1
7	BRACKET	2
Pos.	Denomination	Q.ty

Rev.	Descrizione	Data
08	Redesigned with s.w.	30/06/2015
DRAWING N° P637		SCALE 1:4
*Tolerance variation bigger lower than 20% do not compromise the expansion vessel functioning		
DRAWN	DATE	Signature
GIBIN G.	30/06/2015	
CHECKED	DATE	Signature
BERTOLIN R.	30/06/2015	
APPROVED	DATE	Signature
S.f.i BENETOLO	30/06/2015	
DENOMINATION		
OEM-PRO EXPANSION VESSEL 6L		
MATERIAL		
Dimensions in mm		
This drawing is the property of company ZImet S.p.a. All rights reserved.		
A3		