

# SPARE PARTS EXPLODED VIEW GAS-WALL CONDENSING BOILERS

Model

## PIGMA GREEN EVO

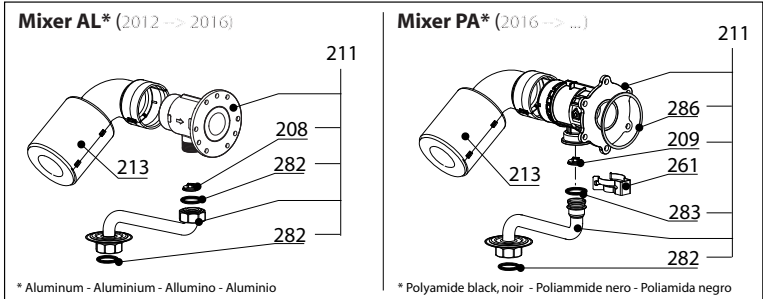
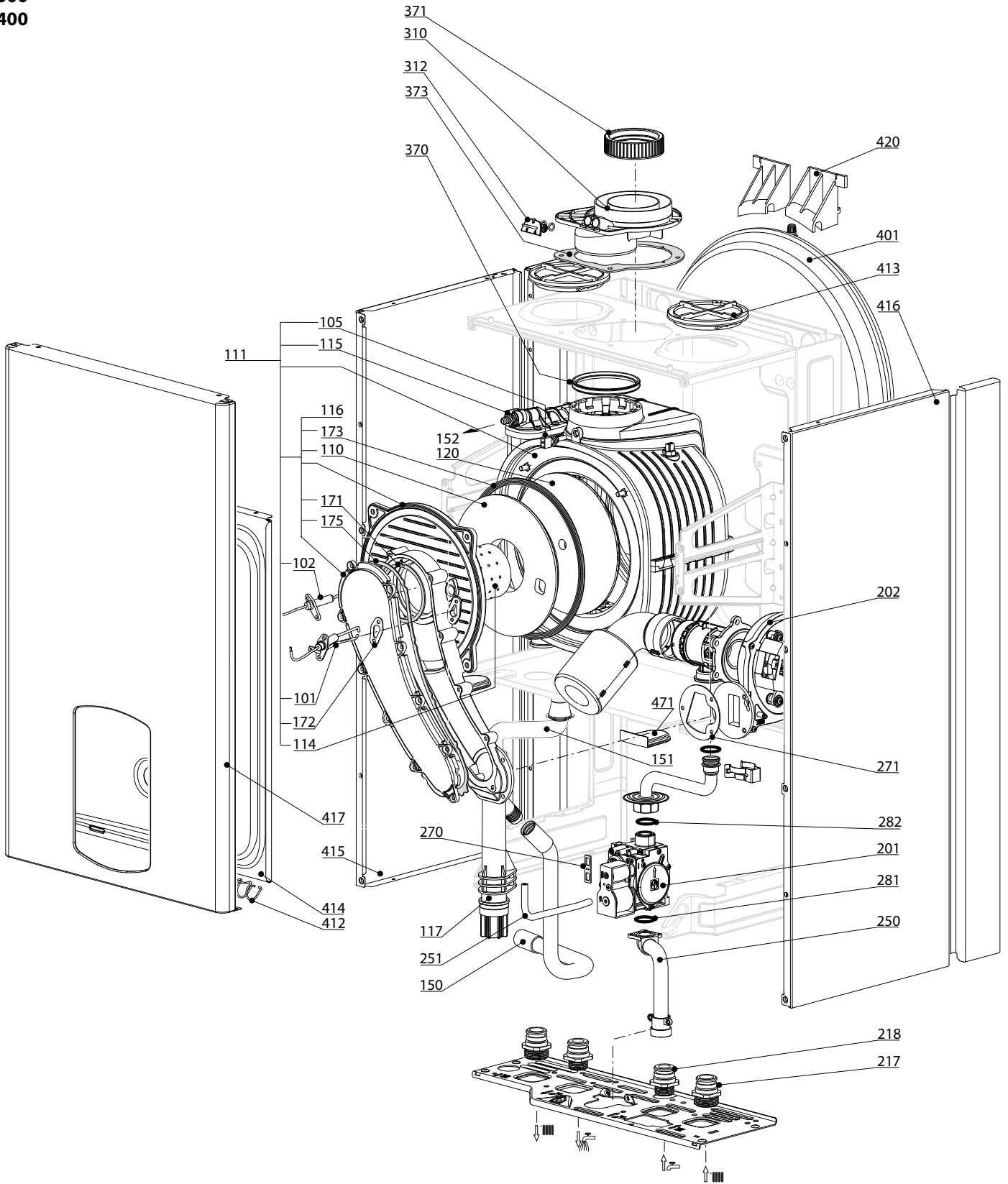
R8203327-06 - 10/05/2016

1	3310224	PIGMA GREEN EVO 25	05-2012	-
2	3310399	PIGMA GREEN 25 EU	03-2015	-
2	3310491	PIGMA GREEN 25 EU A+		
3	3310226	PIGMA GREEN EVO 30	05-2012	-
4	3310400	PIGMA GREEN 30 EU	03-2015	-
5	3310346	PIGMA GREEN E-BUS2 L 30KW	02-2014	08-2015
6	3310402	PIGMA GREEN L 30KW EU	01-2015	-
7	3310232	PIGMA GREEN EVO 35	05-2012	-
8	3310401	PIGMA GREEN 35 EU	03-2015	-
Col	Reference	Model type	Begin	End

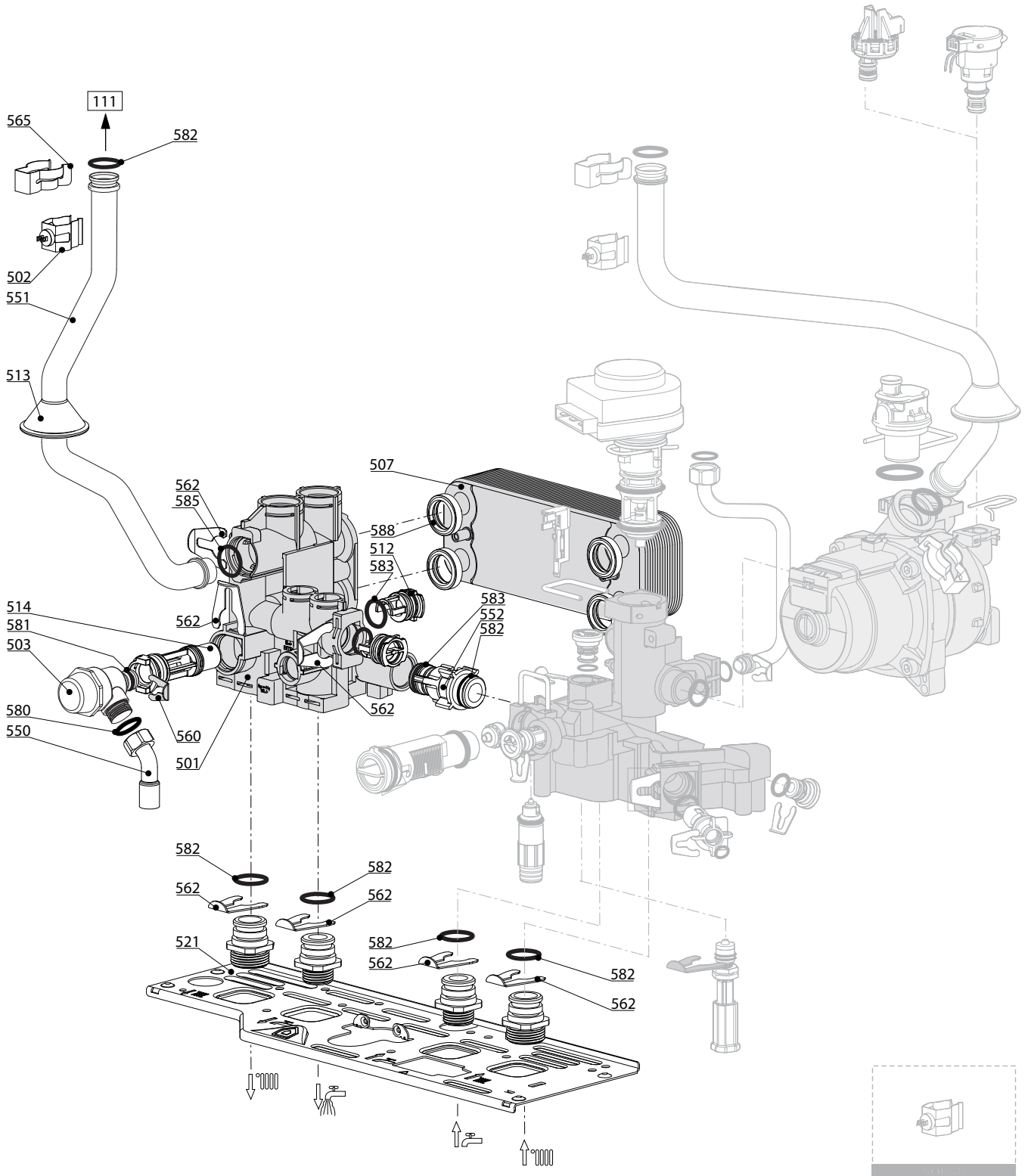
100  
200  
300  
400

PIGMA GREEN EVO

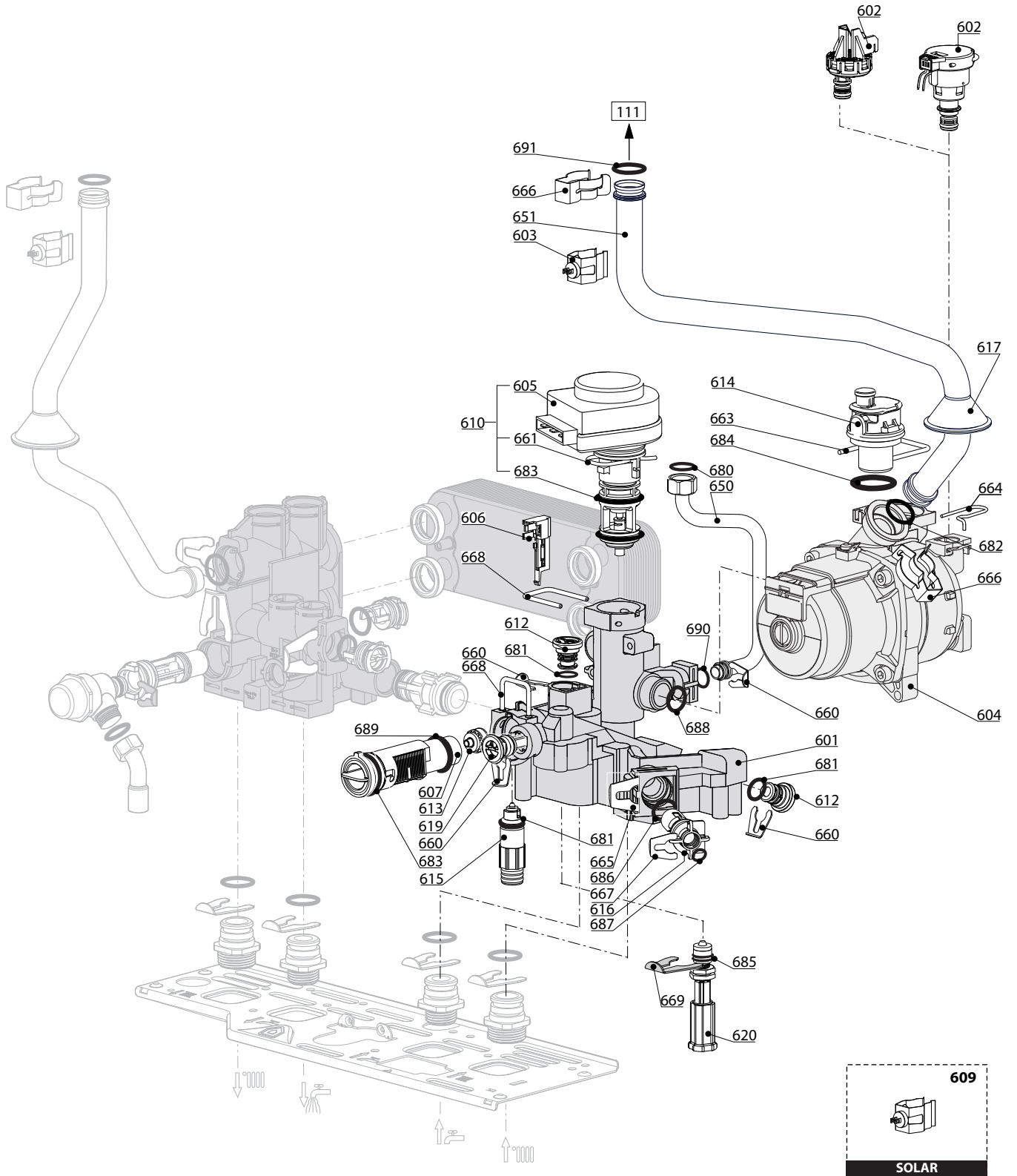
Gas-wall condensing boilers





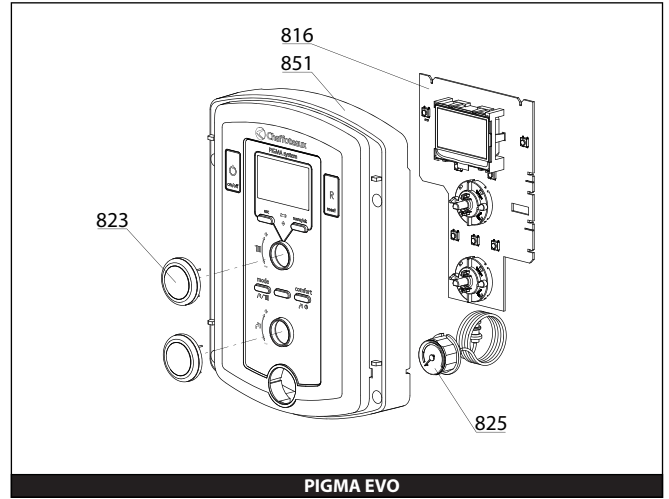
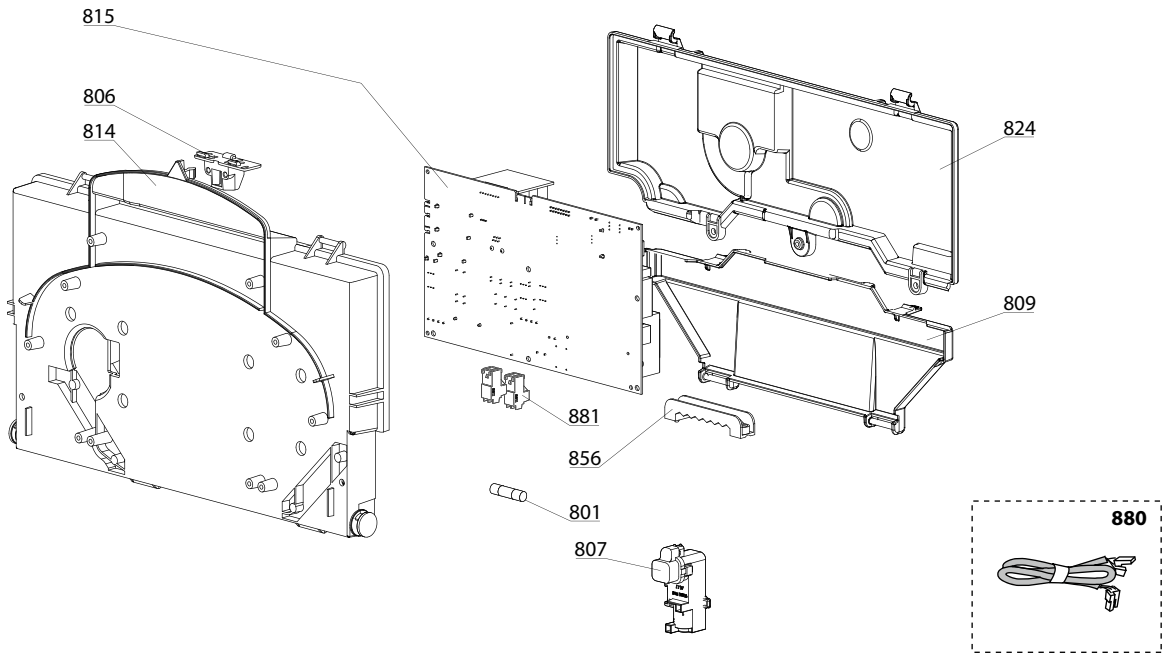


☉→	Description	Manf. Pt. N	Type	PIGMA GREEN E-BUS2-23 PIGMA GREEN 23 EU PIGMA GREEN E-BUS2-30 PIGMA GREEN 30 EU PIGMA GREEN L 30KW EU PIGMA GREEN E-BUS2-35 PIGMA GREEN 35 EU																		From	to
				1	2	3	4	5	6	7	8	9	10	11	12	13	14	15	16	17	18		
0500	<b>FLOW GROUP</b>																						
0501	FLOW GROUP	60001952		●	●	●	●	●	●	●													
0502	TEMPERATURE PROBE + CLIP KIT	990686-01		●	●	●	●	●	●	●	●	●	●	●	●	●	●	●	●				
0503	PRESSURE RELIEF VALVE (3 BAR)	61312668		●	●	●	●	●	●	●	●	●	●	●	●	●	●	●	●				
0507	SANITARY HEAT EXCHANGER (16 P.)	65104333		●	●	●	●	●	●	●	●	●	●	●	●	●	●	●	●				
	SANITARY HEAT EXCHANGER (20 P.)	60001344									●	●											
0512	PLUG	65104445		●	●	●	●	●	●	●	●	●	●	●	●	●	●	●	●				
0513	GROMMET	61010109		●	●	●	●	●	●	●	●	●	●	●	●	●	●	●	●				
0514	BY-PASS	65104336		●	●	●	●	●	●	●	●	●	●	●	●	●	●	●	●				
	BY-PASS 0.45b	60002374									●	●											
0521	HYDRAULIC GROUP SUPPORT	60001375		●	●	●	●	●	●	●	●	●	●	●	●	●	●	●	●				
0550	PIPE (SAFETY VALVE)	65104447		●	●	●	●	●	●	●	●	●	●	●	●	●	●	●	●				
0551	PIPE (C.H. FLOW)	60000859		●	●	●	●	●	●	●	●	●	●	●	●	●	●	●	●				
	PIPE (C.H. FLOW)	60000981														●	●						
0552	BY-PASS PIPE	65104340		●	●	●	●	●	●	●	●	●	●	●	●	●	●	●	●				
0560	CLIP D:10	65104260		●	●	●	●	●	●	●	●	●	●	●	●	●	●	●	●				
0562	CLIP D:18	65104259		●	●	●	●	●	●	●	●	●	●	●	●	●	●	●	●				
0565	CLIP	60000309		●	●	●	●	●	●	●	●	●	●	●	●	●	●	●	●				
0580	SHEET GASKET D: 13.9-10.4-1.5	60061853-02		●	●	●	●	●	●	●	●	●	●	●	●	●	●	●	●				
0581	O-RING 17.96X2.62	65104337		●	●	●	●	●	●	●	●	●	●	●	●	●	●	●	●				
0582	O-RING 17.86X2.62	61308091		●	●	●	●	●	●	●	●	●	●	●	●	●	●	●	●				
0583	O-RING 15.54X2.62	65104325		●	●	●	●	●	●	●	●	●	●	●	●	●	●	●	●				
0585	O-RING 17.04X3.53	65104262		●	●	●	●	●	●	●	●	●	●	●	●	●	●	●	●				
0588	EXCHANGER GASKET	65104334		●	●	●	●	●	●	●	●	●	●	●	●	●	●	●	●				

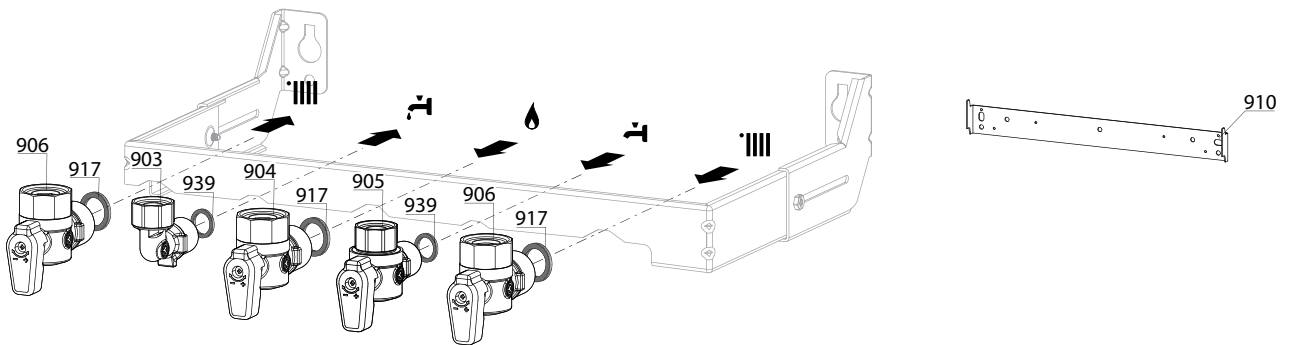




800



900



5000

**5001**  
 Transf. gaz  
 Conv. gas  
 Trasn. gas  
 Transf. gas  
**> G31**  
 (LPG - GPL)

**5002**  
 Transf. gaz  
 Conv. gas  
 Trasn. gas  
 Transf. gas  
**> G20**  
 (NAT - MET)

**5020**  
 Options  
 Accessories  
 Opzioni  
 Accessorio



	Description	Manf. Pt. N	Type	<div style="text-align: right; border: 1px solid black; padding: 5px;">           PIGMA GREEN E-BUS2-23            PIGMA GREEN 25 EU            PIGMA GREEN E-BUS2-30            PIGMA GREEN 30 EU            PIGMA GREEN E-BUS2 L-30            PIGMA GREEN L-30KW EU            PIGMA GREEN E-BUS2-35            PIGMA GREEN 35 EU         </div>														From	to			
				1	2	3	4	5	6	7	8	9	10	11	12	13	14			15	16	17
<b>0800</b>	<b>ELECTRICAL BOX</b>																					
0801	FUSE 250V 2A	61003456			●	●	●	●	●	●	●	●	●	●	●							
0806	PUSH	65104228			●	●	●	●	●	●	●	●	●	●	●							
0807	IGNITER	60001871			●	●	●	●	●	●	●	●	●	●	●							
0809	INSPECTION COVER	60001618			●	●	●	●	●	●	●	●	●	●	●							
0814	CONTROL PANEL	60001616-01			●	●	●	●	●	●	●	●	●	●	●							
0815	P.C.B. (MAIN)	60001898-03				●																
	P.C.B. (MAIN)	60001899-02			●		●								●							
0816	P.C.B. (DISPLAY)	60001906-02			●	●	●	●	●	●	●	●	●	●	●							
0823	KNOB	60001932			●	●	●	●	●	●	●	●	●	●	●							
0824	CONTROL PANEL COVER (REAR)	60001617			●	●	●	●	●	●	●	●	●	●	●							
0825	PRESSURE GAUGE	60001907			●	●	●	●	●	●	●	●	●	●	●							
0851	FRONT CONTROL PANEL COMPLETE	60001909			●	●	●	●	●	●	●	●	●	●	●							
0856	CABLE CLAMP	65103377			●	●	●	●	●	●	●	●	●	●	●							
0880	3-WAY VALVE CABLE	60001621			●	●	●	●	●	●	●	●	●	●	●							
	CABLE (IGNITION ELECTRODE)	60000527			●	●	●	●	●	●	●	●	●	●	●							
	CABLE (IONIZATION ELECTRODE)	60001883			●	●	●	●	●	●	●	●	●	●	●							
	DISPLAY WIRING - 5 WIRES BLUES	60000746			●	●	●	●	●	●	●	●	●	●	●							
	EARTH WIRE	65104286			●	●	●	●	●	●	●	●	●	●	●							
	FAN CABLE	60001624			●	●	●	●	●	●	●	●	●	●	●							
	FEEDER 240V	60001619			●	●	●	●	●	●	●	●	●	●	●							
	FLOW METER - PRESSURE SENSOR CABLE	60001620			●	●	●	●	●	●	●	●	●	●	●							
	GAS VALVE CABLE	60001622			●	●	●	●	●	●	●	●	●	●	●							
	IGNITOR CABLE	60001894			●	●	●	●	●	●	●	●	●	●	●							
	NTC PROBE - NTC EXCHANGER	60001901			●	●	●	●	●	●	●	●	●	●	●							
	PUMP 2V CABLE 5M WILO	65104520	WILO		●																	
	PUMP 2V CABLE 6M WILO	65109585	WILO				●							●								
	PUMP CABLE 1V ENER+	60001887	ENER +			●		●							●							
	PUMP CABLE YONOS	60002376	WILO						●	●												
	SOLAR SENSOR CABLE	60001374			●	●	●	●	●	●	●	●	●	●	●							
0881	CONNECTOR 2P	65111933			●	●	●	●	●	●	●	●	●	●	●							
	CONNECTOR 3P (x5)	65111934-01			●	●	●	●	●	●	●	●	●	●	●							
<b>0900</b>	<b>JIG PLATE &amp; PIPE FITTING</b>																					
0903	HOT WATER CONNECTION	60000891			●	●	●	●	●	●	●	●	●	●	●							
0904	GAS SERVICE TAP	60000898			●	●	●	●	●	●	●	●	●	●	●							
	UNION	65105631			●	●	●	●	●	●	●	●	●	●	●							
0905	COLD WATER TAP	60000895			●	●	●	●	●	●	●	●	●	●	●							
0906	WATER FLOW & RETURN SERVI. TAP	60000885			●	●	●	●	●	●	●	●	●	●	●							
0910	WALL HOOK	60000625			●	●	●	●	●	●	●	●	●	●	●							
0917	SHEET GASKET D: 24-17-1.5	60061855-19			●	●	●	●	●	●	●	●	●	●	●							
0939	SHEET GASKET D: 16.5-11-1.5	60061854-14			●	●	●	●	●	●	●	●	●	●	●							
<b>5000</b>	<b>ACCESSORIES</b>																					
5001	BURNER JET FULL KIT G31 12-38 KW	60001946-01			●	●	●	●	●	●	●	●	●	●	●							
5002	BURNER JET FULL KIT G20 12-38 KW	60002785			●	●	●	●	●	●	●	●	●	●	●							
5020	EXTERNAL SENSOR WIRED GAL EVO	65112215				●																
	MODULATING ROOM SENSOR GAL EVO	65112214				●																
	SUBSTITUTION KIT GRAPHITE+SPRING	60001298			●	●	●	●	●	●	●	●	●	●	●							
	SYSTEM INTERFACE	65112083-03				●																
	WALL PLATE	65112824				●																

## LIST OF THE ABBREVIATIONS

HW .....	: Hot water.
CW .....	: Cold water.
C .....	: Ceramic resistance (normal heating).
Ca .....	: Ceramic resistance (accelerated heating)
TP .....	: Immersion heater.
1F .....	: With fittings.
2F .....	: Without fittings.
3F .....	: With fittings and another outlet connection.
AMI .....	: With mixing valve.
SMI .....	: Without mixing valve.
PUISS .....	: Power of th appliance.
PN .....	: Appliance with normal pression.
LP .....	: Appliance with low pression.
PV .....	: Appliance with variable power.
PF .....	: Appliance with fixed power.

## IDENTIFICATION PLATE

### SERIAL NUMBER

<b>10 Characters :</b>	04 05 125 011	Sequential number Manufacturing day Year of manufacture
<b>11 Characters :</b>	1 95 065004 - 31	Technical number of the appliance Sequential number Year of manufacture
Month of manufacture : from 1 to 9 → Jan. to Sep., O → Oct., N → Nov., D → Dec.		
<b>19 Characters :</b>	08 05 0013199 900640031	Product reference Sequential number
Year of manufacture Month of manufacture		
<b>20 Characters :</b>	3675007 XX 2 07 070 00315	Sequential number Manufacturing day Year of manufacture
Product reference Millenium of manufacture		
<b>21 Characters :</b>	3675007 XX 07 070 0000315	Sequential number Manufacturing day
Product reference Year of manufacture		