

SPARE PARTS EXPLODED VIEW
GAS-WALL BOILER ATM. BURNER

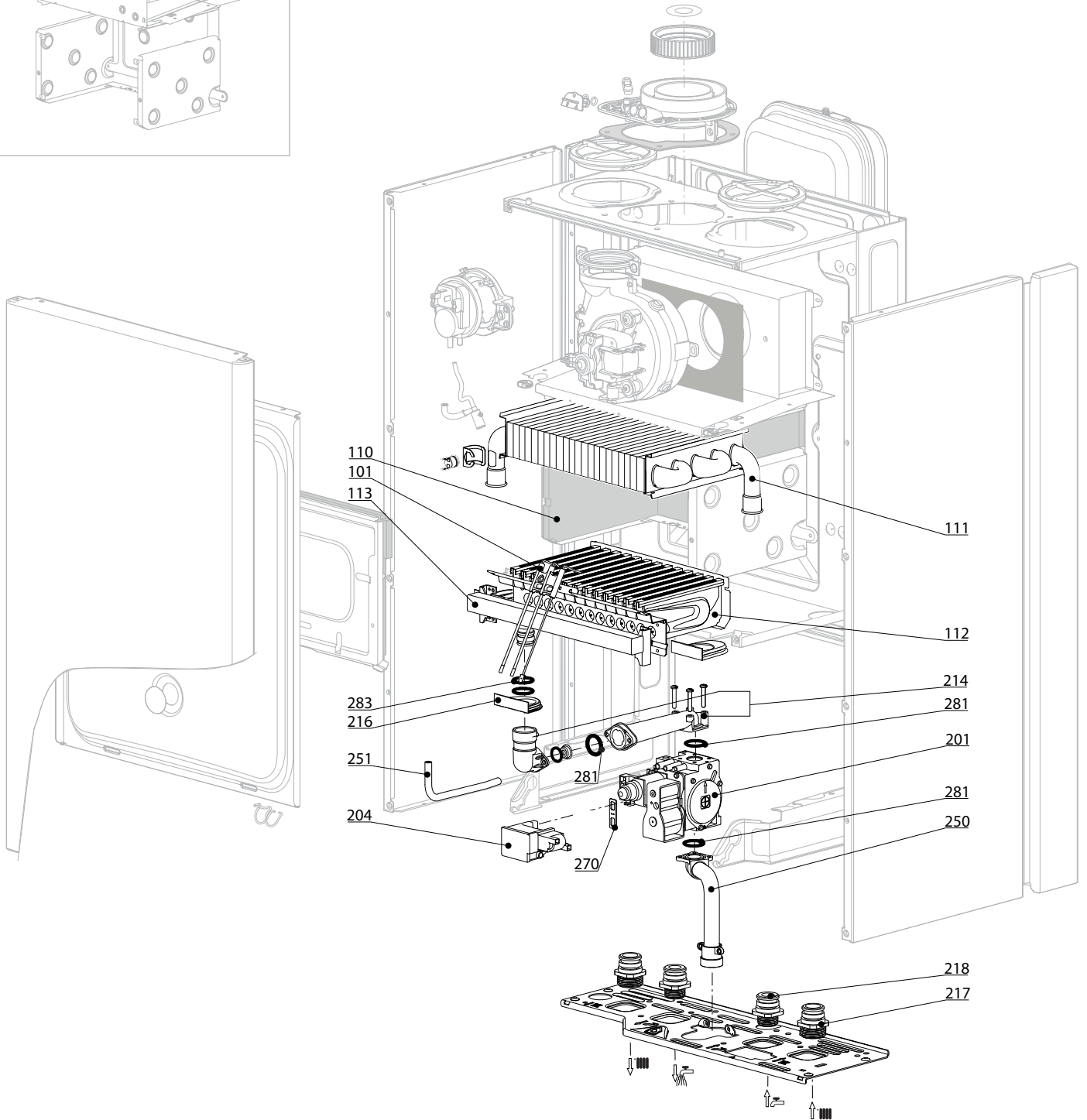
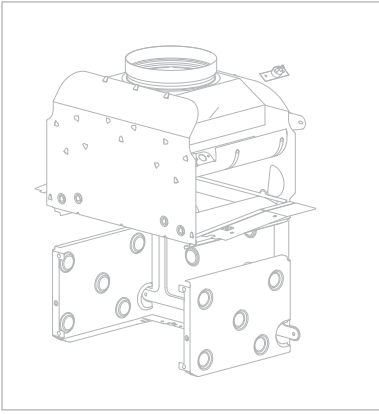
Model


URBIA EVO - SERELIA EVO

R8203343-04 - 16/10/2017

1	3310267	URBIA EVO 25 CF	05-2012	10-2015
2	3310271	URBIA EVO 30 CF	05-2012	10-2015
3	3310269	URBIA EVO 25 FF	05-2012	01-2016
4	3310273	URBIA EVO 30 FF	05-2012	06-2016
5	3310274	URBIA EVO 35 FF	05-2012	06-2016
6	3310278	SERELIA EVO 30 FF IT	05-2012	06-2016

Col	Reference	Model type	Begin	End
-----	-----------	------------	-------	-----

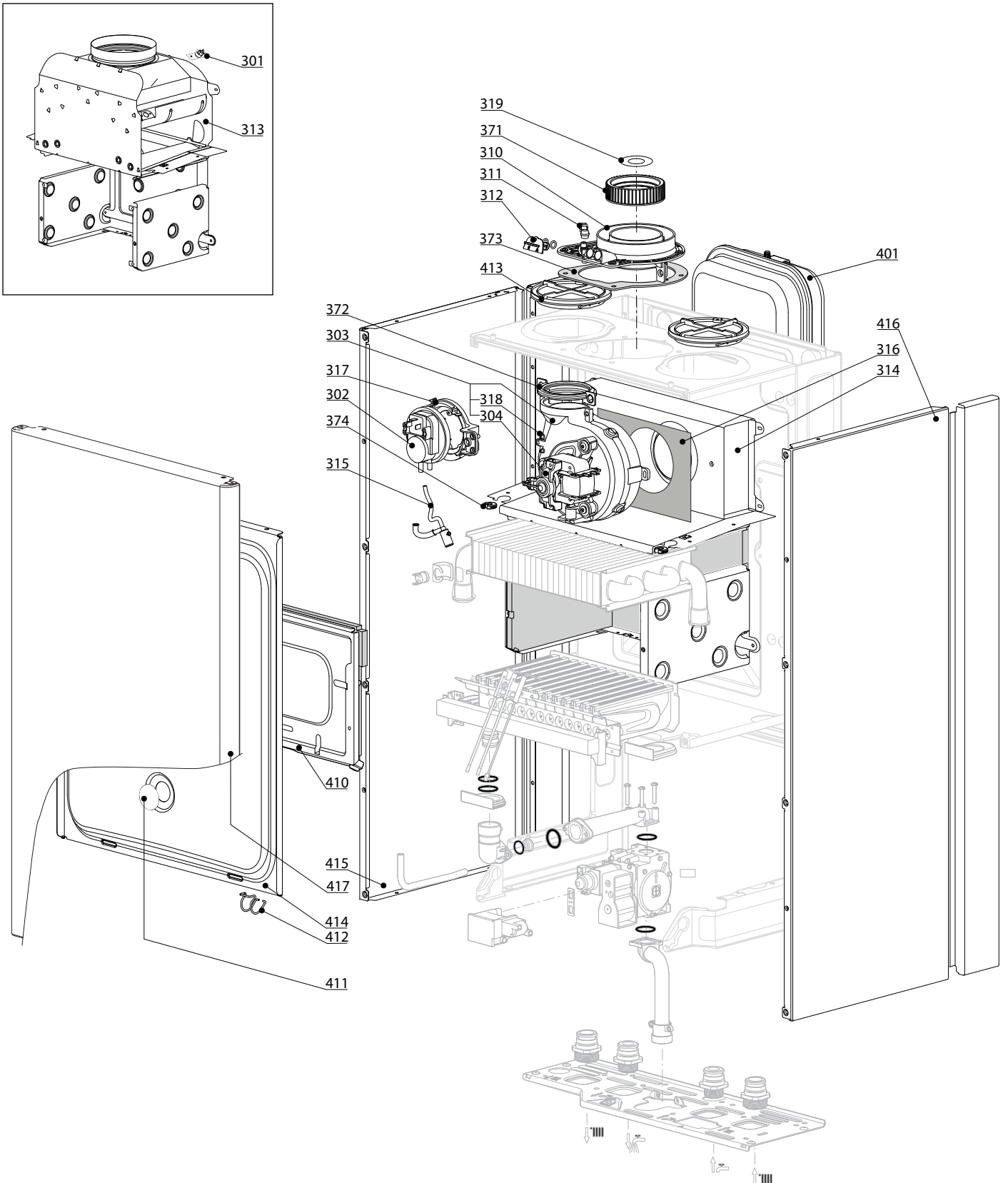


☉➔	Description	Manf. Pt. N	Type	URBIA EVO 25 CF URBIA EVO 30 CF URBIA EVO 35 CF URBIA EVO 30 FF URBIA EVO 35 FF SERELIA EVO 30 FF																		
				1	2	3	4	5	6	7	8	9	10	11	12	13	14	15	16	17	18	From
0100	BURNER ASSEMBLY																					
0101	ELECTRODE (IGNITION/IONIZATION)	65104549		•	•	•	•	•	•													
0110	PANELS (KIT)	65104695		•			•		•													
	PANELS (KIT)	65105029			•				•													
	PANELS (KIT)	65106298					•															
0111	HEAT EXCHANGER	65104247		•																		
	HEAT EXCHANGER	65105041								•												
	HEAT EXCHANGER	65106297					•															
	HEAT EXCHANGER	65111931			•																	
	HEAT EXCHANGER	65111932							•		•											
0112	BURNER 11NP	65106294								•												
	BURNER 13NP	60001582		•																		
	BURNER 13NP	65104220									•			•								
	BURNER 15NP	65105027						•														
	BURNER 16NP	65106431												•								
0113	GAS MANIFOLD 11 INJ. D:1.32	65106302	NAT							•												
	GAS MANIFOLD 13 INJ. D:1.25	65104302	NAT		•																	
	GAS MANIFOLD 13 INJ. D:1.32	65104226	NAT								•			•								
	GAS MANIFOLD 15 INJ. D:1.25	65105026	NAT			•																
	GAS MANIFOLD 16 INJ. D:1.32	65105997	NAT											•								
0200	GAS SECTION																					
0201	GAS VALVE	65104254		•	•	•	•	•	•	•												
0204	SPARK GENERATOR	60001888		•	•	•	•	•	•	•												
0214	PIPE (GAS VALVE/BURNER)	65104230		•	•	•	•	•	•	•												
0216	GROMMET	60000624		•	•	•	•	•	•	•												
0217	UNION (3/4")	65104326		•	•	•	•	•	•	•												
0218	UNION (1/2")	65104327		•	•	•	•	•	•	•												
0250	GAS TUBE	60000720		•	•	•	•	•	•	•												
0251	EPDM PIPE	65104296								•	•	•	•	•								
0270	GASKET (SPARK GENERATOR)	574279		•	•	•	•	•	•	•												
0281	O-RING 22.22X2.62	65104304		•	•	•	•	•	•	•												
0283	O-RING 17.17X1.78	65104303		•	•	•	•	•	•	•												

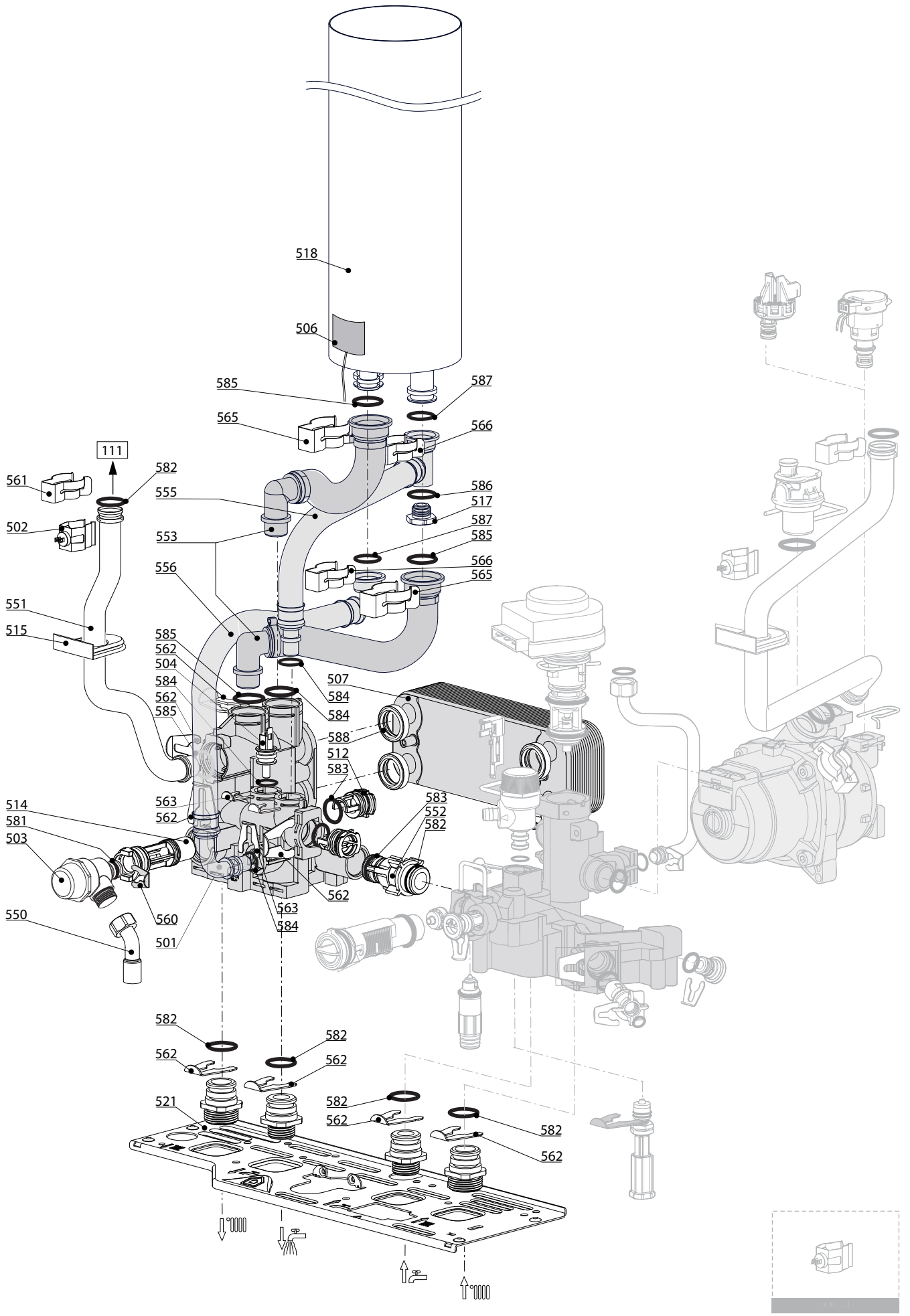
300
400

URBIA EVO - SERELIA EVO


Gas-wall boiler atm. burner

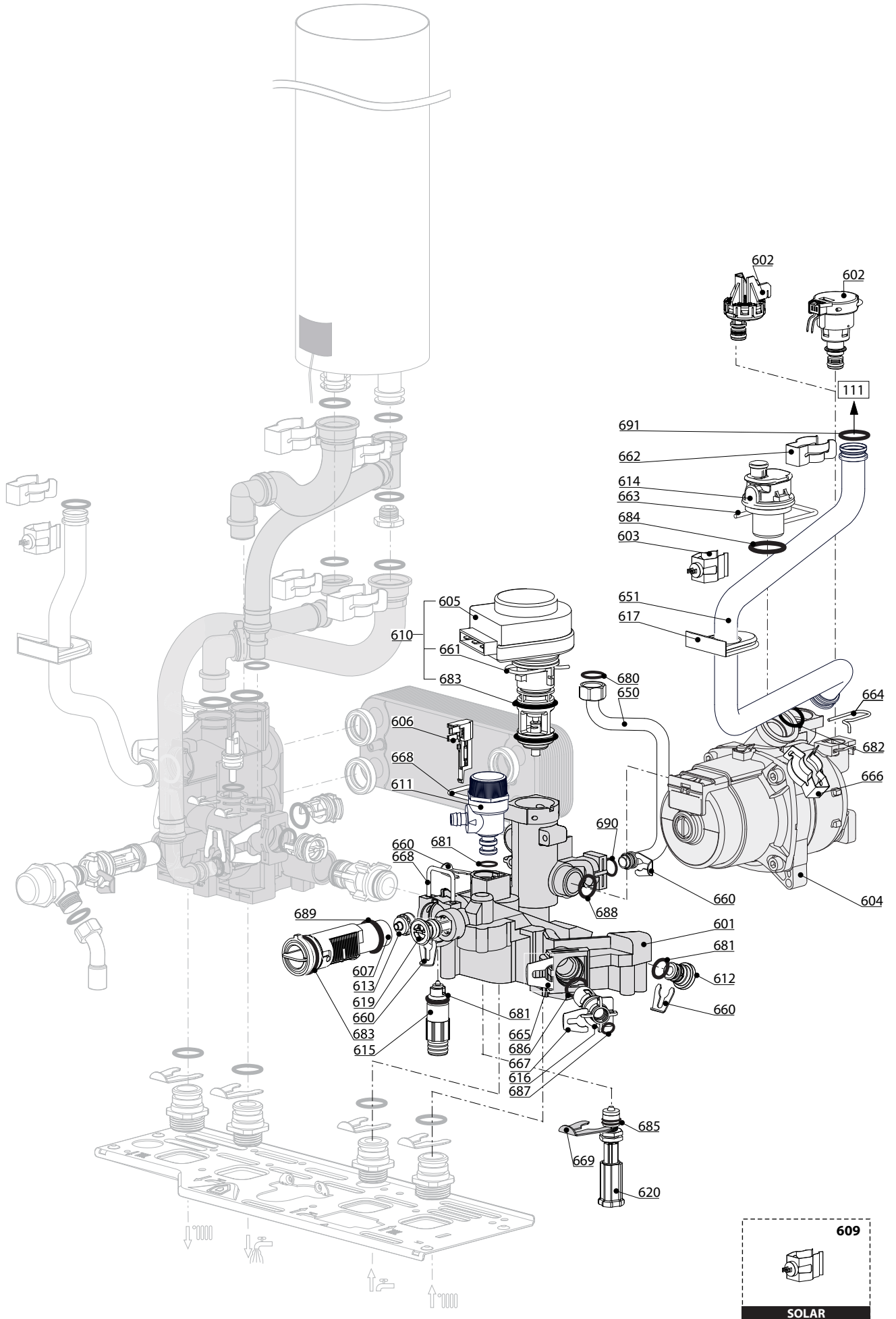


Description	Manf. Pt. N	Type	URBIA EVO 25 CF URBIA EVO 30 CF URBIA EVO 35 CF URBIA EVO 30 FF SERELIA EVO 35 FF SERELIA EVO 30 FF																		From	to
			1	2	3	4	5	6	7	8	9	10	11	12	13	14	15	16	17	18		
0300 FAN ASSEMBLY																						
0301 THERMOSTAT 75-65°C	999539		•	•																		
0302 AIR PRESSURE SWITCH 50 Pa	65104671-01				•																	
AIR PRESSURE SWITCH 74 Pa	65104672-01					•	•	•														
0303 FAN	65104231					•		•														
FAN	65104255				•																	
FAN	65105042							•														
0304 HALL SENSOR 15/24/25 FF	65108301				•																	
HALL SENSOR 28/30/35 FF	65108255					•	•	•														
0310 FLUE (EXHAUST MANIFOLD/HEADER)	65105393				•	•	•	•														
0311 AIR INTAKE COVER	573329				•	•	•	•														
0312 FLUE INTAKE PLUG	65104295				•	•	•	•														
0313 COMBUSTION CHAMBER 24 CF	65104218		•																			
COMBUSTION CHAMBER 28 CF	65105028			•																		
0314 COMBUSTION CHAMBER 24/28 FF	65104219							•		•												
COMBUSTION CHAMBER 24/28 FF	65106295							•														
COMBUSTION CHAMBER 35 FF	65105040									•												
0315 CONDENSATE TRAP	65104623					•	•	•	•													
0316 PANEL (INSULATION - FAN)	65104305					•	•	•	•													
0317 SUPPORT (AIR PRESSURE SWITCH)	65104378					•	•	•	•													
0318 VENTURI 15/24FF	65106516					•																
VENTURI 28/30FF	65106515							•		•												
VENTURI 32/35FF	65106517									•												
0319 RESTRICTOR KIT	60001598						•	•	•	•												
0371 COLLAR GASKET	65104258						•	•	•	•												
0372 FAN GASKET	65104257						•	•	•	•												
0373 GASKET	60000317						•	•	•	•												
0374 CABLE INLET RUBBER WASHER	60000716		•	•			•	•	•	•												
0400 SEALED CASE																						
0401 EXPANSION VESSEL 7.5L	60000823		•	•		•	•	•	•													
0410 PANEL (COMBUSTION CHAMBER)	65104240		•			•	•		•													
PANEL (COMBUSTION CHAMBER)	65105033				•				•													
0411 SIGHT GLASS	65104232							•	•	•	•											
0412 SPRING FRONT PANEL (KIT)	65104298							•	•	•	•											
0413 AIR RETURN COVER	65104249							•	•	•	•											
0414 PANEL (FRONT - SEALED CHAMBER)	65105679-02							•	•	•	•											
0415 CASE PANEL (L.H. SIDE)	65105676		•	•		•	•	•	•													
0416 CASE PANEL (R.H. SIDE)	65105677		•	•		•	•	•	•													
0417 CASE PANEL (FRONT)	60000719		•	•		•	•	•	•													



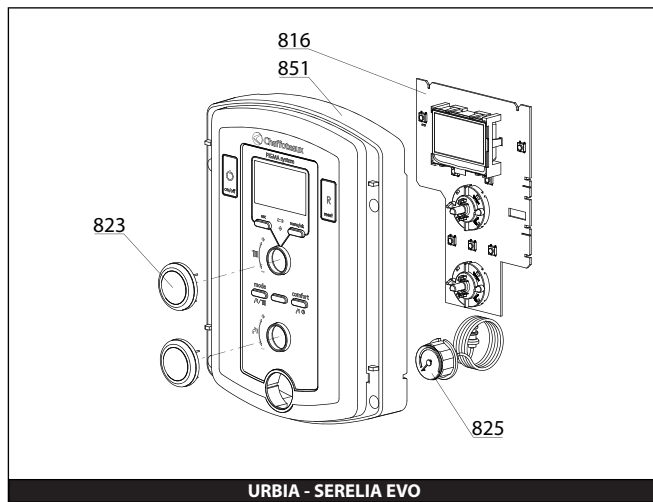
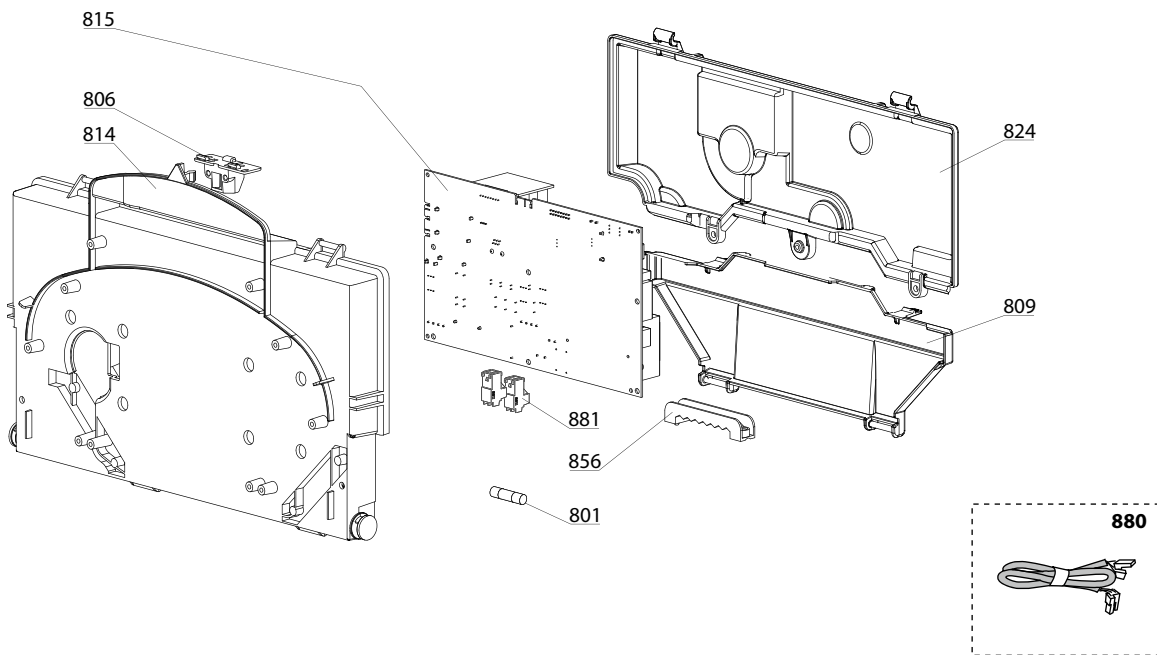
URBIA EVO 25 CF
 URBIA EVO 30 CF
 URBIA EVO 35 CF
 URBIA EVO 30 FF
 URBIA EVO 35 FF
 SERELIA EVO 30 FF

☉⇒	Description	Manf. Pt. N	Type																			
				1	2	3	4	5	6	7	8	9	10	11	12	13	14	15	16	17	18	From
0500	FLOW GROUP																					
0501	FLOW GROUP	60000873		●	●	●	●	●	●													
0502	TEMPERATURE PROBE + CLIP	990686-01		●	●	●	●	●	●													
0503	PRESSURE RELIEF VALVE (3 BAR)	61312668		●	●	●	●	●	●													
0504	NTC PROBE	65104338		●	●	●	●	●	●													
0506	NTC PROBE	60000822		●	●	●	●	●	●													
0507	SANITARY HEAT EXCHANGER (16 P.)	65104333		●	●	●	●	●	●													
0512	PLUG	65104445		●	●	●	●	●	●													
0514	BY-PASS	65104336		●	●	●	●	●	●													
0515	GROMMET	60000808		●	●	●	●	●	●													
0517	PLUG 1/4"	60000996		●	●	●	●	●	●													
0518	CYLINDER 15L	60000832								●												
	CYLINDER 4L	60000831		●	●	●	●	●	●													
0521	HYDRAULIC GROUP SUPPORT	60001375		●	●	●	●	●	●													
0550	PIPE (SAFETY VALVE)	65104447		●	●	●	●	●	●													
0551	PIPE (C.H. FLOW)	60000722		●		●	●		●													
	PIPE (C.H. FLOW)	60000989			●				●													
0552	BY-PASS PIPE	65104340		●	●	●	●	●	●													
0553	KIT FLEXIBLE HEATING	60001299		●	●	●	●	●	●													
0555	INLET PIPE	60000854		●	●	●	●	●	●													
0556	PIPE (SECONDARY RETURN)	60000849		●	●	●	●	●	●													
	PIPE (SECONDARY RETURN)	60000855								●												
0560	CLIP Ø 10	65104260		●	●	●	●	●	●													
0561	CLIP	61307589		●	●	●	●	●	●													
0562	CLIP D:18	65104259		●	●	●	●	●	●													
0563	CLIP	65104339		●	●	●	●	●	●													
0565	CLIP	60000309		●	●	●	●	●	●													
0566	CLIP	65105109		●	●	●	●	●	●													
0581	O-RING 17.96X2.62	65104337		●	●	●	●	●	●													
0582	O-RING 17.86X2.62	61308091		●	●	●	●	●	●													
0583	O-RING 15.54X2.62	65104325		●	●	●	●	●	●													
0584	O-RING 11.91X2.62	60000850		●	●	●	●	●	●													
0585	O-RING 17.04X3.53	65104262		●	●	●	●	●	●													
0586	SHEET GASKET D: 11-5-1.5	60061853-07		●	●	●	●	●	●													
0587	O-RING D: 12.1-2.7	60024164-16		●	●	●	●	●	●													
0588	EXCHANGER GASKET	65104334		●	●	●	●	●	●													

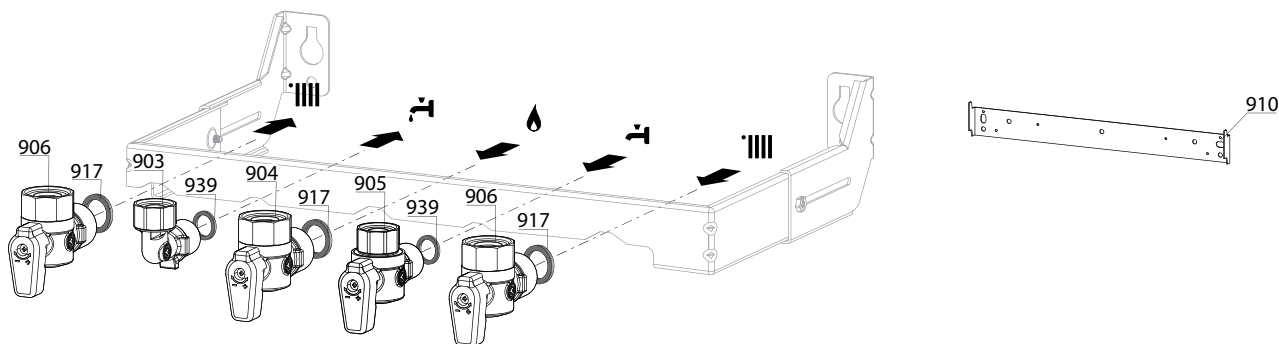


☞	Description	Manf. Pt. N	Type	<div style="display: flex; justify-content: space-between; align-items: center; border: 1px solid black; padding: 2px;"> <div style="writing-mode: vertical-rl; transform: rotate(180deg); font-size: 8px; margin-right: 5px;">URBIA EVO 23 CF</div> <div style="writing-mode: vertical-rl; transform: rotate(180deg); font-size: 8px; margin-right: 5px;">URBIA EVO 30 CF</div> <div style="writing-mode: vertical-rl; transform: rotate(180deg); font-size: 8px; margin-right: 5px;">URBIA EVO 35 CF</div> <div style="writing-mode: vertical-rl; transform: rotate(180deg); font-size: 8px; margin-right: 5px;">URBIA EVO 30 FF</div> <div style="writing-mode: vertical-rl; transform: rotate(180deg); font-size: 8px; margin-right: 5px;">URBIA EVO 35 FF</div> <div style="writing-mode: vertical-rl; transform: rotate(180deg); font-size: 8px; margin-right: 5px;">SERELIA EVO 30 FF</div> <div style="writing-mode: vertical-rl; transform: rotate(180deg); font-size: 8px; margin-right: 5px;">SERELIA EVO 35 FF</div> <div style="writing-mode: vertical-rl; transform: rotate(180deg); font-size: 8px; margin-right: 5px;">SERELIA EVO 30 FF</div> <div style="writing-mode: vertical-rl; transform: rotate(180deg); font-size: 8px; margin-right: 5px;">SERELIA EVO 35 FF</div> </div>																		<div style="border: 1px solid black; padding: 2px; display: inline-block;"> 31 </div>	
				1	2	3	4	5	6	7	8	9	10	11	12	13	14	15	16	17	18	From	to
0600	RETURN GROUP																						
0601	RETURN GROUP	60000845		●	●		●	●	●	●													
0602	LOW PRESSURE SWITCH	65105090				●	●	●	●	●													
0603	TEMPERATURE PROBE + CLIP	990686-01		●	●	●	●	●	●	●													
0604	PUMP 5M 2V WILO	65104319	WILO	●	●	●	●	●	●														
	PUMP 6M 2V WILO	60000591	WILO							●													
0605	MOTOR (3-WAY VALVE)	61302483-01		●	●	●	●	●	●	●													
0606	SENSOR (REED)	65104323		●	●	●	●	●	●	●													
0607	FLOW METER	60000870		●	●	●	●	●	●	●													
0609	TEMPERATURE PROBE + CLIP	65105079		●	●	●	●	●	●	●													
0610	MOTOR + SPRING 3 WAY VALVE KIT	60001583-01		●	●	●	●	●	●	●													
0611	PRESSURE RELIEF VALVE (7 BAR)	60000171		●	●	●	●	●	●	●													
0612	PLUG	65104377		●	●	●	●	●	●	●													
0613	RIDUCTORS (KIT)	65104318		●	●	●	●	●	●	●													
0614	AUTO AIR VENT - WILO	65104703	WILO	●	●	●	●	●	●	●													
0615	KIT DRAIN SCREW	60001385		●	●	●	●	●	●	●													
0616	WATER FILTER	60001372		●	●	●	●	●	●	●													
0617	GROMMET	60000807		●	●	●	●	●	●	●													
0619	CHECK VALVE CARTRIDGE	65105323		●	●	●	●	●	●	●													
0620	FILLING TAP KIT	65114261		●	●	●	●	●	●	●													
0650	PIPE (EXPANSION VESSEL)	60000851		●	●	●	●	●	●	●													
	PIPE (EXPANSION VESSEL)	60000856								●													
0651	PIPE (C.H. RETURN)	60001273		●		●																	
	PIPE (C.H. RETURN)	60001274								●													
	PIPE (C.H. RETURN)	60001285						●		●													
	PIPE (C.H. RETURN)	60001286			●																		
0660	CLIP Ø 10	65104260		●	●	●	●	●	●	●													
0661	CLIP	65104332		●	●	●	●	●	●	●													
0662	CLIP	61307589		●	●	●	●	●	●	●													
0663	U-CLIP	65104704		●	●	●	●	●	●	●													
0664	CLIP	65104322		●	●	●	●	●	●	●													
0665	CLIP	65104331		●	●	●	●	●	●	●													
0666	CLIP	60000309		●	●	●	●	●	●	●													
0667	CLIP	65100680		●	●	●	●	●	●	●													
0668	CLIP	65104316		●	●	●	●	●	●	●													
0669	CLIP	65104339		●	●	●	●	●	●	●													
0680	GASKET 3/8"	573521		●	●	●	●	●	●	●													
0681	O-RING 9.19X2.62	65104313		●	●	●	●	●	●	●													
0682	O-RING 17.04X3.53	65104262		●	●	●	●	●	●	●													
0683	O-RING 23.47X2.62	65104315		●	●	●	●	●	●	●													
0684	O-RING 3X35 EPDM 75 SH	65104705		●	●	●	●	●	●	●													
0685	O-RING 7.65X1.78	65104329		●	●	●	●	●	●	●													
0686	O-RING 15.54X2.62	65104325		●	●	●	●	●	●	●													
0687	O-RING 5.7X1.9	61009834-10		●	●	●	●	●	●	●													
0688	O-RING 21.89X2.62	65104320		●	●	●	●	●	●	●													
0689	O-RING 17.17X1.78	65104303		●	●	●	●	●	●	●													
0690	O-RING 8.9X2.7	61009834-14		●	●	●	●	●	●	●													
0691	O-RING 17.86X2.62	61308091		●	●	●	●	●	●	●													

800



900



5000

5001
 Transf. gaz > GPL
 Conv. gas > GPL
 Trasn. gas > GPL
 Transf. gas > GPL

5002
 Transf. gaz > Nat
 Conv. gas > Nat
 Trasn. gas > Met
 Transf. gas > Met

5020
 Options
 Accessories
 Opzioni
 Accessorio

☉⇒	Description	Manf. Pt. N	Type	<div style="display: flex; justify-content: space-between; font-size: small;"> URBIA EVO 25 CF URBIA EVO 30 CF URBIA EVO 35 CF URBIA EVO 30 FF URBIA EVO 35 FF SERELIA EVO 30 FF </div>																		From	to
				1	2	3	4	5	6	7	8	9	10	11	12	13	14	15	16	17	18		
0800	ELECTRICAL BOX																						
0801	FUSE 250V 2A	61003456		●	●	●	●	●															
0806	PUSH	65104228		●	●	●	●	●	●														
0809	INSPECTION COVER	60001618		●	●	●	●	●	●														
0814	CONTROL PANEL COVER (FRONT)	60001616-01		●	●	●	●	●	●														
0815	P.C.B. (MAIN)	60001897-03		●	●	●	●	●	●														
0816	P.C.B. (DISPLAY)	60001906-02		●	●	●	●	●	●														
0823	KNOB	60001933		●	●	●	●	●	●														
0824	CONTROL PANEL COVER (REAR)	60001617		●	●	●	●	●	●														
0825	PRESSURE GAUGE	60001907		●	●	●	●	●	●														
0851	FRONT CONTROL PANEL COMPLETE	60001908		●	●	●	●	●	●														
0856	CABLE CLAMP	65103377		●	●	●	●	●	●														
0880	3-WAY VALVE CABLE	60001621		●	●	●	●	●	●														
	CABLE (IONIZATION ELECTRODE)	60001883		●	●	●	●	●	●														
	CABLE (IONIZATION ELECTRODE)	65104518		●	●	●	●	●	●														
	DISPLAY WIRING - 5 WIRES BLUES	60000746		●	●	●	●	●	●														
	EARTH WIRE	65104286		●	●	●	●	●	●														
	FAN CABLE	60001892				●	●	●	●														
	FEEDER 240V	60001619		●	●	●	●	●	●														
	FLOW METER - PRESSURE SENSOR CABLE	60001620		●	●	●	●	●	●														
	HEAT SENSOR CYLINDER	60001882		●	●	●	●	●	●														
	NTC - PRES SWITCH CABLE	60001889				●	●	●	●														
	NTC - GAS VALVE CABLE	60001885		●	●	●	●	●	●														
	NTC PROBE - OVERHEAT THERMOSTAT CABLE	60001900		●	●	●	●	●	●														
	PUMP 2V CABLE 5M WILO	65104520	WILO	●	●	●	●	●	●														
	PUMP 2V CABLE 6M WILO	65109585	WILO						●														
	SPARK GENERATOR	60001888		●	●	●	●	●	●														
	TACHOMETER FAN CABLE	60001893				●	●	●	●														
0881	CONNECTOR 2P	65111933		●	●	●	●	●	●														
	CONNECTOR 3P (x5)	65111934-01		●	●	●	●	●	●														
0900	JIG PLATE & PIPE FITTING																						
0903	HOT WATER CONNECTION	60000891		●	●	●	●	●	●														
0904	GAS SERVICE TAP	60000898		●	●	●	●	●	●														
0905	COLD WATER TAP	60000895		●	●	●	●	●	●														
0906	WATER FLOW & RETURN SERVI. TAP	60000885		●	●	●	●	●	●														
0910	WALL HOOK	60000625		●	●	●	●	●	●														
0917	SHEET GASKET D: 24-17-1.5	60061855-19		●	●	●	●	●	●														
0939	SHEET GASKET D: 16.5-11-1.5	60061854-14		●	●	●	●	●	●														
5000	ACCESSORIES																						
5001	BURNER JET FULL KIT (LPG)	65104582-01						●	●														
	BURNER JET FULL KIT (LPG)	65105166							●														
	BURNER JET FULL KIT (LPG)	65106690-01		●	●																		
	BURNER JET FULL KIT (LPG)	65106695-01			●																		
5002	BURNER JET FULL KIT (NG)	65104583-01						●	●	●													
	BURNER JET FULL KIT (NG)	65106691-01		●	●	●																	

LIST OF THE ABBREVIATIONS

HW	: Hot water.
CW	: Cold water.
C	: Ceramic resistance (normal heating).
Ca	: Ceramic resistance (accelerated heating)
TP	: Immersion heater.
1F	: With fittings.
2F	: Without fittings.
3F	: With fittings and another outlet connection.
AMI	: With mixing valve.
SMI	: Without mixing valve.
PUISS	: Power of th appliance.
PN	: Appliance with normal pression.
LP	: Appliance with low pression.
PV	: Appliance with variable power.
PF	: Appliance with fixed power.

IDENTIFICATION PLATE

SERIAL NUMBER

10 Characters :	04 05 125 011	Sequential number
		Manufacturing day
		Year of manufacture
11 Characters :	1 95 065004 - 31	Technical number of the appliance
Month of manufacture :		Sequential number
from 1 to 9 → Jan. to Sep.,		Year of manufacture
O → Oct., N → Nov.,		
D → Dec.		
19 Characters :	08 05 0013199 900640031	Product reference
Year of manufacture		Sequential number
Month of manufacture		
20 Characters :	3675007 XX 2 07 070 00315	Sequential number
Product reference		Manufacturing day
Millenium of manufacture		Year of manufacture
21 Characters :	3675007 XX 07 070 0000315	Sequential number
Product reference		Manufacturing day
Year of manufacture		